

# DeMaMech Exchange Program EU - Japan

April – September 2006

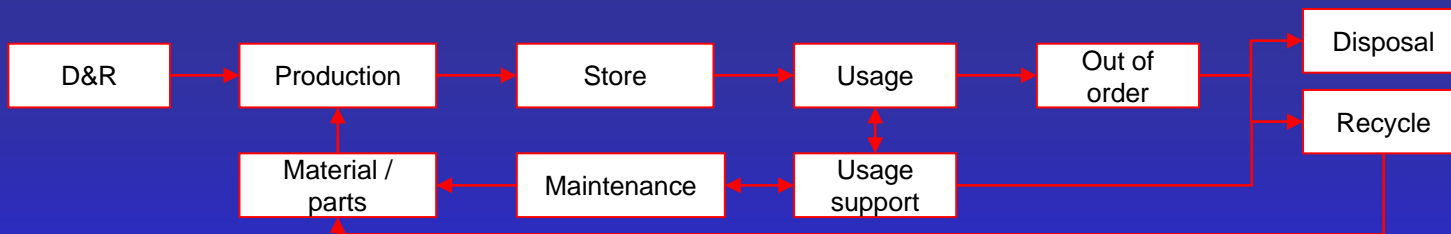
The University of Tokyo (東京大学)

Kimura Lab: Product Life Cycle Modeling Group

- Research
  - Life cycle management
  - Life cycle simulation
- Student life
  - Lab and University
  - Sight seeing
  - Party

## There are two major issues for designing a product life cycle:

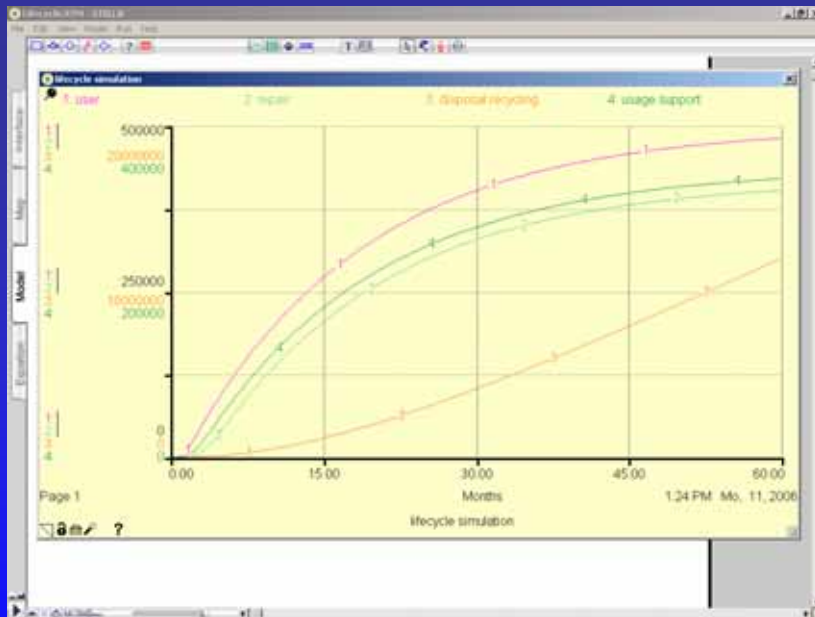
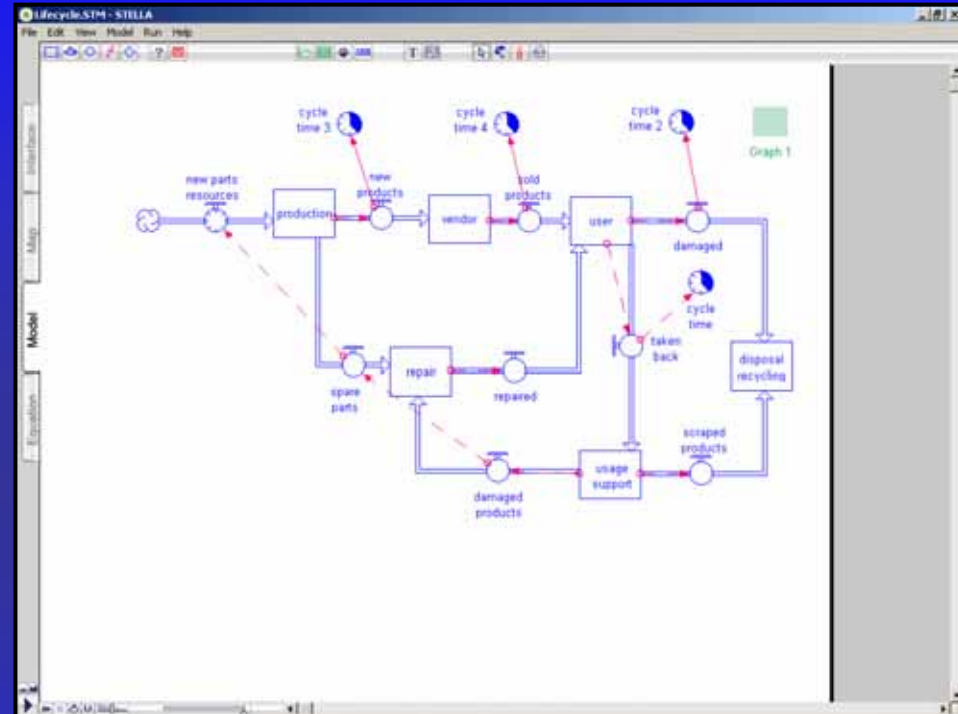
1. How to manage product flow during the total product life cycle, especially in the stages of product usage, maintenance and recycling/disposal.
2. How to evaluate and to assure product quality throughout the whole product life cycle, even under heavy deterioration conditions.



Why life cycle management? => Better quality for the customer

Why life cycle simulation? => Improving the life cycle scenario

- Life cycle simulation
- Using a simulation software improve the lifecycle of an alternator.



The model I made for the simulation of the alternator life cycle and the output.



Party Hijoshi



Lab BBQ



Hiking



Daibutsu (Kamakura)



School of Engineering summer party - singing -



Tokyo Tower



Lab Party



Japanese Class

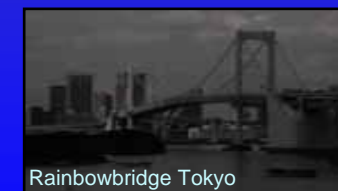
- Lab
- Sightseeing
- Sports
- Party
- Friends
- ...



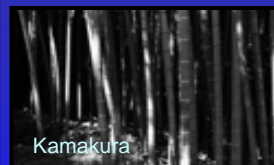
Sunrise at Fuji-san



Sumo



Rainbowbridge Tokyo



Kamakura



Tokyo Disaster Prevention Center



Goukon