

University of Tokyo

General

- ❖ DeMaMech EU-Japan exchange program in 2005/06
- ❖ Yamamoto Lab
- ❖ stayed at the International Komaba Lodge
- ❖ University life is very different from the one in Europe
- ❖ English and Japanese
- ❖ Lab life and student life at the university
- ❖ opportunities to get to know Tokyo
- ❖ Different way of life, culture and Lifestyle
- ❖ living costs in Tokyo can be expensive

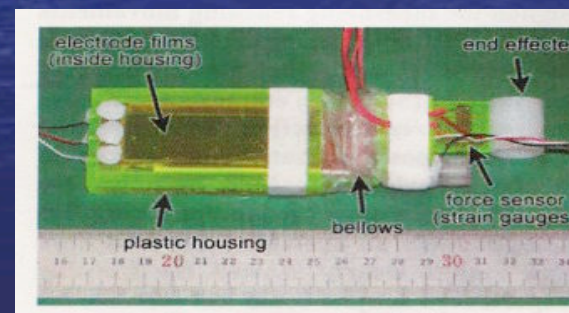
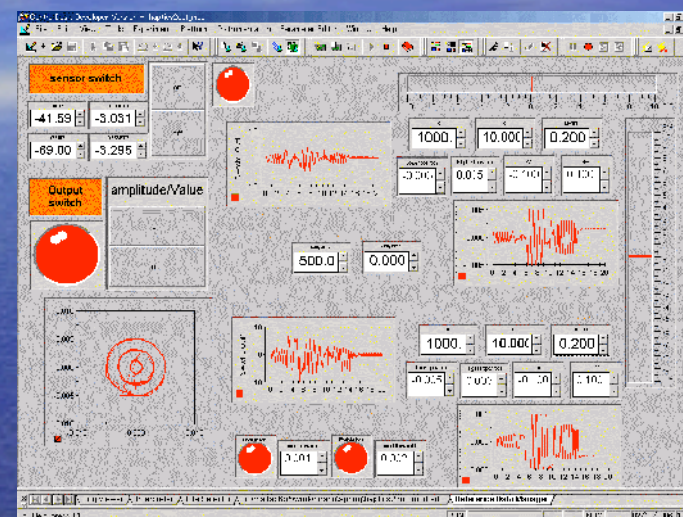
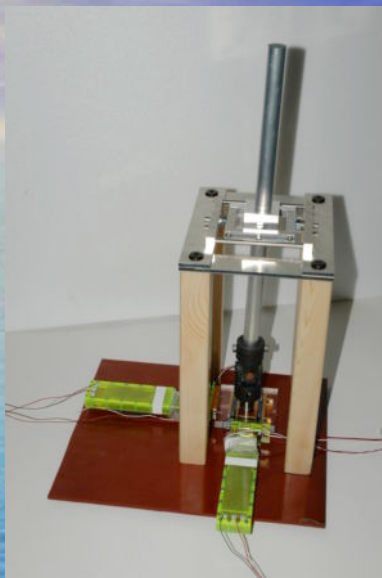
Lab

- ❖ At the beginning students don't help you or give you suggestions unless you ask them a specific question
- ❖ Students are shy and not communicative, need time to get used to a foreigner
- ❖ Very good equipment
- ❖ Working with new technologies and software
- ❖ Every day open
- ❖ different from the system in Europe

Research

- In this research project the goal was to develop a human-machine interaction/collaboration systems that can physically assist or cooperate with human operators utilizing mechatronic sensors and actuators.
- Two-DOF haptic device using electrostatic motor is developed.
- The haptic device is designed for investigating human motor control of a performed task with the hand.
- With Matlab Simulink different force fields are applied to test the device and the behaviour.

Testing





*Exchange student **life***

