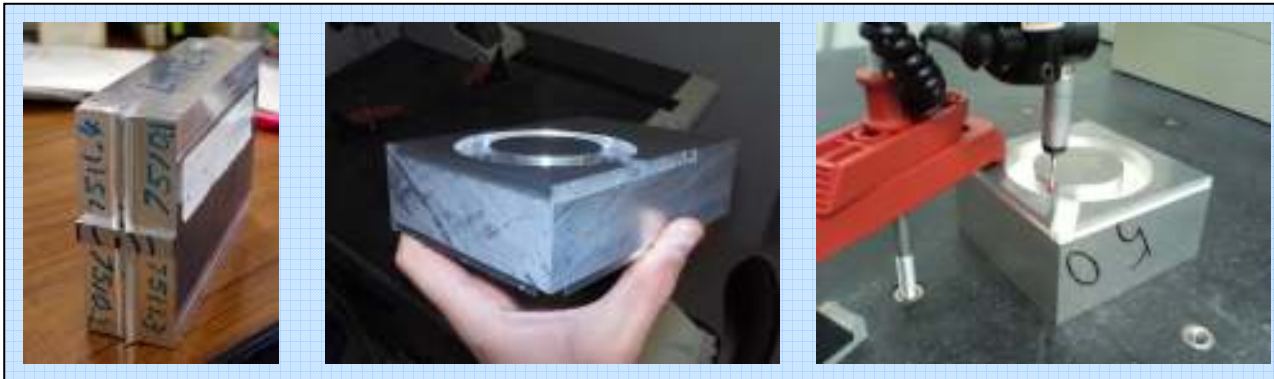


Summary

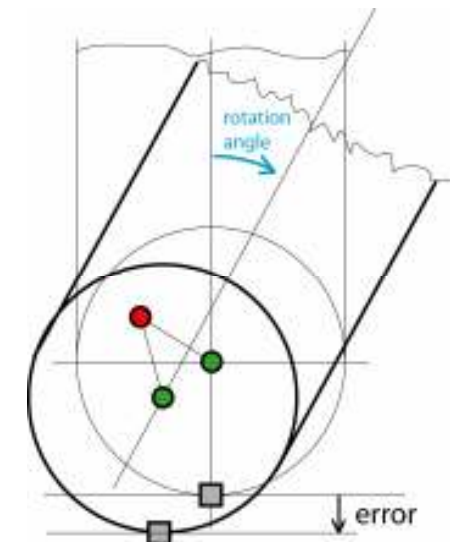
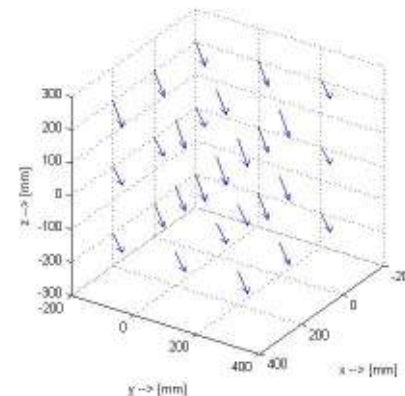
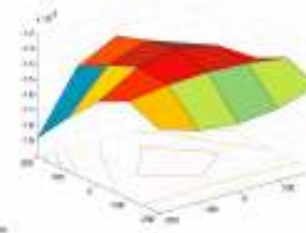
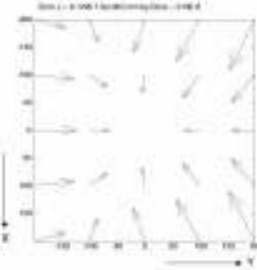
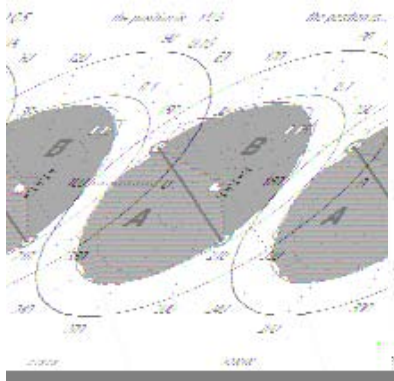
- **Student: Jan Los**
- **DeMaMech, Japan student exchange**
- **Period: April – September 2007**
- **Location:**
 - **Osaka university**
 - **Graduate school of Engineering**
 - **Takeuchi Lab**

Research (1)

- HexaM PKM milling machine -->
- Experiments for error measurements

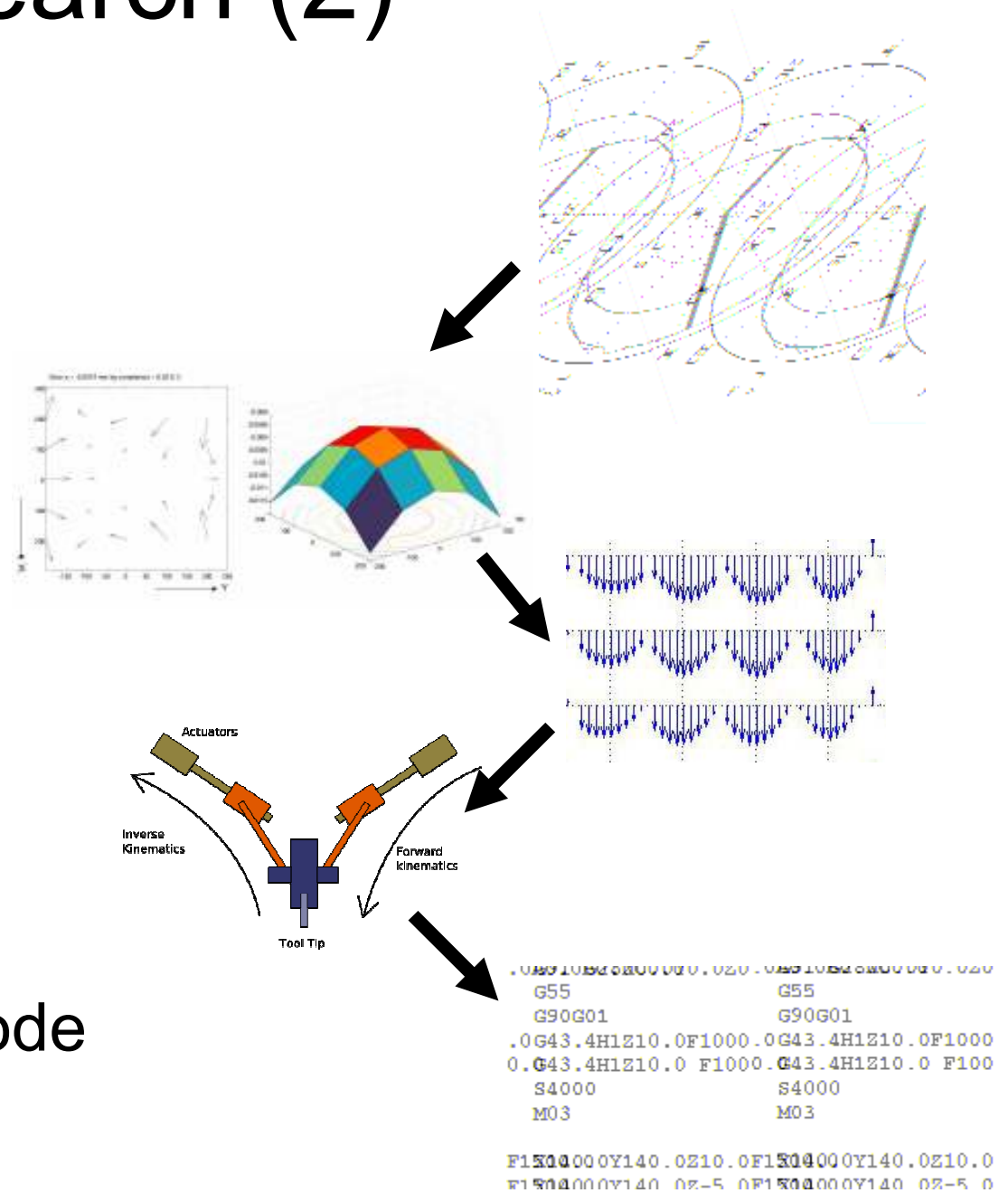


- Kinematic modelling



Research (2)

- Investigate errors
 - Error Source unknown
- Predict error patterns
 - Source chosen
- Compare patterns
- Choose error sources
- Compensate the NC code



Factory visits / Field Trips

- Machine tool manufacturers



- MEMS Exhibition



Exchange student life (1)

- Lab Life



Exchange student life (2)

- Dormitory



- Host Family



- Church





Exchange student life (3)



- Sight seeing & Adventure



Summary

- **Student: Jan Los**
- **DeMaMech, Japan student exchange**
- **Period: April – September 2007**
- **Location:**
 - **Osaka university**
 - **Graduate school of Engineering**
 - **Takeuchi Lab**